

nutribullet.
GO



User guide.

Important safeguards.

WHEN OPERATING YOUR NUTRIBULLET® GO, REMEMBER: SAFETY ALWAYS COMES FIRST

Warning! To avoid the risk of serious injury, carefully read all instructions before operating your nutribullet® GO. When using any electrical appliance, basic safety precautions should always be observed, including the following important information.

! Save these instructions!
FOR HOUSEHOLD USE ONLY

READ ALL INSTRUCTIONS CAREFULLY AND THOROUGHLY BEFORE OPERATING.

PERSONAL SAFETY

NEVER OPERATE THE UNIT WITHOUT FIRST ATTACHING THE CUP.

NEVER PUT HOT LIQUIDS IN THE BLENDING VESSEL. Use cool or room-temperature ingredients. Heated ingredients can create internal pressure in a sealed blending vessel, which may erupt upon opening and cause thermal injury.

WARNING: Friction from the rotating blade can cause ingredients to heat and generate internal pressure in the

sealed vessel. DO NOT continuously operate the machine FOR MORE than ONE MINUTE. If the vessel feels warm to the touch after blending, allow it to cool before attempting to detach the blade. Once the temperature has decreased, slowly and carefully untwist the blade with the opening pointed away from your body.

NEVER blend carbonated beverages. Built-up pressure from released gases can cause container to burst, resulting in possible injury. **Always make sure the cup is**

securely locked in place on the base before blending. The motor will not turn on unless the cup is fully locked in place. Do not attempt to remove the cup while the unit is in operation.

NEVER permit any blended mixture to sit inside a sealed vessel without first releasing internal pressure. Sugars in fruit and vegetable ingredients can ferment, releasing gases that cause pressure to build within the vessel. When this happens, ingredients may burst out of the vessel when agitated by moving or opening. To protect against fire, electrical shock and injury to persons, DO NOT immerse the motor base or cable in water or any other liquid.

BLADES ARE SHARP. Handle carefully and ALWAYS cover the blades with the Cup or Blade Cap when not in use.

DO NOT place hand or fingers inside the cup when attaching cup to base unit, and always keep hands and fingers away from the blade assembly.

The nutribullet® GO has sharp blades and moving parts and is NOT intended for use by children or persons with reduced physical, sensory, or mental capabilities, or who lack of experience and knowledge of its safe operation. Such persons require close supervision and thorough instruction on its proper use and safe operation. Close supervision is necessary when any appliance is used by or near children. Children should be supervised to ensure that they do not play with the appliance.

Turn off power when the appliance is not in use, before putting the cup on the base or taking it off the base, and before cleaning.

Always make sure the unit is properly and completely assembled before turning on the power and operating the appliance.

Blades may stop turning during usage if the cup is overfilled. If this occurs, completely turn off the unit by pressing the power button. Ensure that all moving parts have come to a complete stop, then invert the cup/blade/base assembly, detach the cup from the base, and remove excess food from the cup. Ensure remaining ingredients do not exceed the MAX Fill Line before reattaching the cup to the power base and resuming blending.

Do not leave the appliance unattended when in use.

Do not incinerate this appliance even if it is severely damaged. The lithium-ion batteries can explode in a fire. Always properly recycle products powered by lithium-ion batteries.

To eliminate any potential choking hazard for young children, remove and safely

discard any protective coverings or plastic bags that the appliance or its parts may come in.

Ensure that the areas immediately under or next to the appliance are clean and dry before operating.

Do not operate when wet.

Do not use this appliance for anything other than its intended use. Do not attempt to blend anything other than cool food or liquids intended for consumption. Misuse may cause injury.

Do not use this appliance if any parts appear to be damaged.

PRODUCT SAFETY

DO NOT put any non-food items into the cup for the purpose of blending.

This appliance is **NOT designed to be used with ice or frozen items. Do not use with frozen fruits or vegetables.**

Make sure the unit is turned off after each use. Ensure power is off (no light is on), the motor has stopped, and the blades

have completely stopped moving before taking off cup or storing unit.

DO NOT let the USB cable touch hot surfaces or any extreme heat source, or become knotted, tangled, or frayed.

DO NOT modify the charging cord in any way. Do not use cord if it shows signs of fraying or other damage.

Regularly inspect the charging cable and the appliance for any damage.

Do not operate appliance with a damaged cable, or if the appliance malfunctions or is dropped or damaged in any manner. Contact Customer Service for further assistance.

The use of attachments not recommended or sold by the manufacturer may cause fire, electric shock, or injury, and will void the limited warranty.

Do not exceed the MAX Fill line with solid or liquid ingredients before blending. Doing so can result in leakage.

Any significant spillage onto the surface under or around the appliance, or onto the appliance itself, should be cleaned and dried before continuing to use the appliance.

Remove rinds and peels of fruit and vegetable ingredients before blending.

Do not blend stone fruit in this appliance unless pits/seeds have been removed.

Keep the appliance clean. Refer to the **Care and Maintenance** section for tips and best practices.

Do not attempt to repair or service this appliance. Contact customer service for further assistance.

If any of the contained instructions or warnings are not understood, **please contact Customer Service for further assistance.**

**! Save these
• instructions!**

Contents.

05	What's included
07	Assembly guide
08	Using nutribullet® GO
10	LED light indications
11	Recipes
14	Care & maintenance
14	How to clean the nutribullet® GO
14	Replacement parts

What's included.



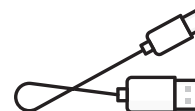
motor base/
blade assembly



nutribullet® GO
385mL cup



to-go lid



USB type-c
cable



blade cover

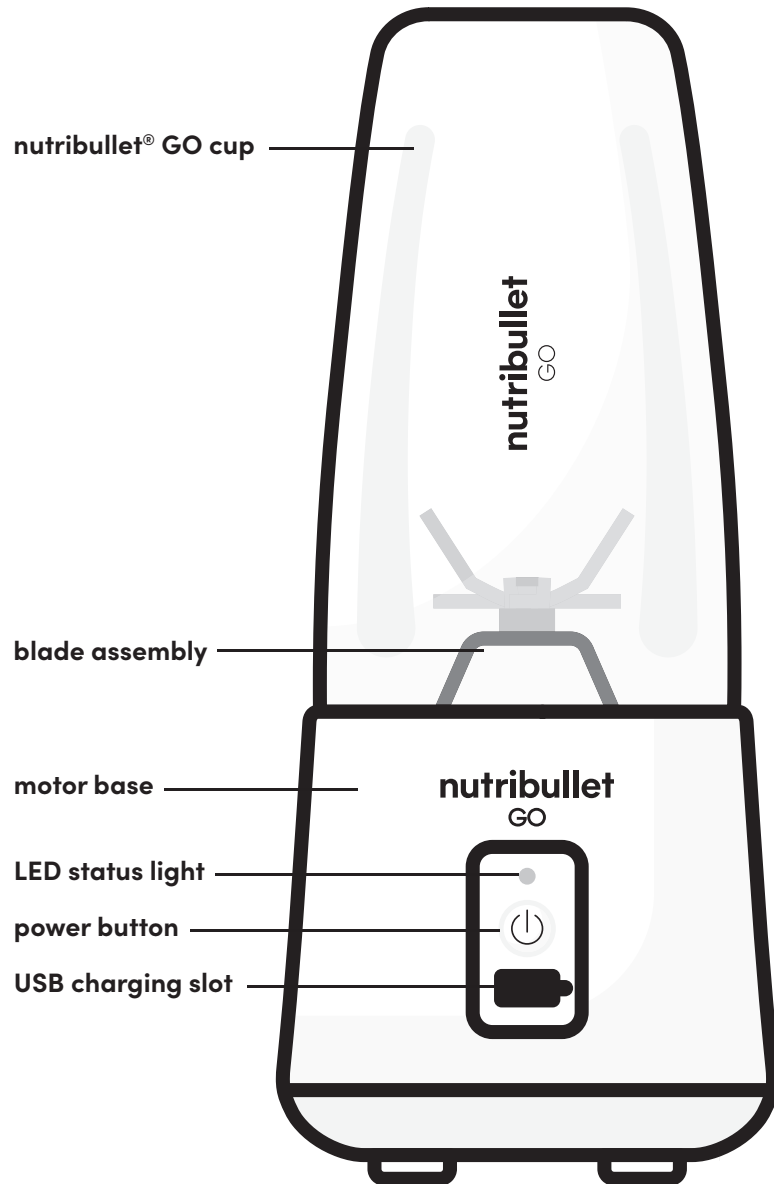
Before you blend: prep steps.

- **CLEAN UNIT** (see Care and Maintenance section).
- **CHARGE UNIT** by plugging the smaller end of the included USB cable into the slot right below the Power Button (on the front of the base), and the larger end of the cable into any powered USB slot (in a USB plug adapter plugged into a power outlet, or on a computer, etc.).
- **We recommend fully charging the unit before using it for the first time. It should take under 5 hours to fully charge.**
- **A RED LIGHT** indicates the unit is charging.
- **A BLUE LIGHT** indicates the battery is fully charged

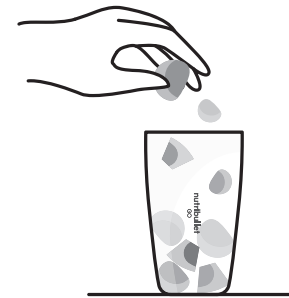
Thank you for purchasing the nutribullet® GO

Product configurations may vary. To see our full list of nutribullet® GO accessories please visit nutribullet.co.uk.

Assembly guide.

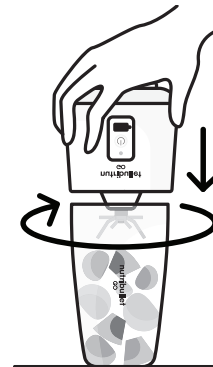


Using the nutribullet® GO.



- 1 Add ingredients into the nutribullet® cup (but do not exceed the **MAX** line = 300 ml is ~10 fluid ounces). **Always leave a little room at the top of the cup for best blending results.**

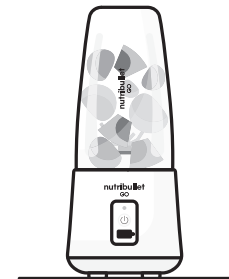
 **CAUTION.** Do not put hot liquids in the blending vessel.



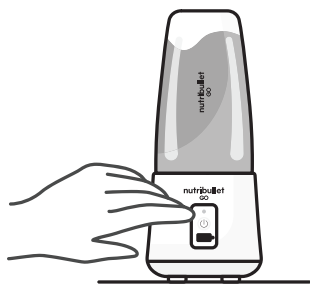
- 2 Holding the base from the bottom, flip it upside-down

and lower onto the rim of the cup. Twist the base clockwise to firmly fasten it onto the cup. **The BLUE LIGHT on the Power Button will flash five times** to indicate that the base and cup are locked, secure, and ready for blending.

NOTE: THE CUP MUST BE LOCKED, OR THE MOTOR WILL NOT RUN.



- 3 With the cup locked firmly in place on the base, slowly invert the blender so the base can be placed on a dry, level surface for blending.
- 4 **Press the Power Button twice to turn the motor on** and begin blending. The Blue light will remain illuminated during blending.



NOTE: The Power Button will only glow blue when the base and cup are fastened and locked in place. If the Power Button is not illuminated, or if it flashes red and blue*, keep twisting the cup onto the blade until properly secured.

Press the **Power Button TWICE** in quick succession to start the motor and begin blending. The **BLUE LED** light will stay illuminated throughout the duration of operation.

- 5** Stop blending by pressing the **Power Button ONCE**. The blue LED light will turn off when the motor has powered off.

NOTE: This unit will automatically stop blending after 30 seconds.



Do not operate unit for more than two consecutive cycles or continuously for over 1 minute.

- 6** Once you have finished blending, flip the unit upside-down and twist the base counter-clockwise to remove it from the cup.

- 7** When not in use, screw the blade cover onto the base.

NOTE: ALWAYS make sure that the unit is powered off and the blades have come to a complete stop before separating the cup from the base.

LED light indications.

During operation of your nutribullet® GO, you will notice LED lights glowing **BLUE** or **RED** at various points of operation. Here is what these lights indicate. (**NOTE:** a lack of illumination indicates that the unit is completely powered off; the motor is not in operation, and the blades have come to a complete stop).

LED STATUS	INDICATES
RED LIGHT IS ILLUMINATED	UNIT PLUGGED IN, BATTERY IS CHARGING
BLUE LIGHT IS ILLUMINATED	UNIT PLUGGED IN, BATTERY FULLY CHARGED
FLASHING RED AND BLUE LIGHTS	CUP IS NOT FULLY LOCKED ONTO THE BASE
FLASHING BLUE LIGHT	CUP IS LOCKED IN PLACE ON BASE, AND BLENDER IS READY TO USE
BLUE LED REMAINS ILLUMINATED AFTER DOUBLE-CLICKING POWER BUTTON	BLENDER IS IN ACTIVE USE AND RUNNING NORMALLY, LAST 30 SECONDS
FLASHING BLUE LIGHT AFTER BLENDING	UNIT IS DONE BLENDING
RED LED FLASHES 10 TIMES	BLADES ARE BLOCKED BY FOOD
RED LED FLASHES FOR 30 SECONDS	LOW BATTERY, NEEDS TO BE CHARGED
RED LED FLASHES 5 TIMES	UNIT IS OVERHEATING, NEEDS TO COOL DOWN BEFORE RUNNING AGAIN

Recipes.

Creamy strawberry banana smoothie.

120 ML	UNSWEETENED ALMOND COCONUT BLEND MILK (OR MILK OF CHOICE)	Add all ingredients in the order listed and blend for the automatic 30-second cycle. If necessary, repeat the cycle for one more round to yield a smoother consistency.
1 TBSP	GREEK YOGURT	
3 SMALL	SMALL STRAWBERRIES, QUARTERED	
½ SMALL	BANANA, SLICED	
2 TBSP	VANILLA PROTEIN POWDER	

Chocolate banana protein smoothie.

180 ML	UNSWEETENED VANILLA ALMOND MILK (OR CHOICE ALTERNATIVE)	Add all ingredients in the order listed and blend for the automatic 30-second cycle. If necessary, repeat the cycle for one more round to yield a smoother consistency.
1	BANANA, SLICED	
1 TBSP	PEANUT BUTTER	
2 ½ TBSP	CHOCOLATE PROTEIN POWDER	

Blueberry vanilla smoothie.

180 ML	UNSWEETENED ALMOND COCONUT BLEND MILK (OR MILK OF CHOICE)	Add all ingredients in the order listed and blend for the automatic 30-second cycle. If necessary, repeat the cycle for one more round to yield a smoother consistency.
120 GRAMS	BLUEBERRIES	
2 TBSP	VANILLA PROTEIN POWDER	

Protein-packed kiwi smoothie.

180 ML	COCONUT WATER	Add all ingredients in the order listed and blend for the automatic 30-second cycle. If necessary, repeat the cycle for one more round to yield a smoother consistency.
1 SMALL	SOFT KIWI, QUARTERED	
2 ½ TBSP	CHOCOLATE PROTEIN POWDER	

Matcha smoothie.

180 ML UNSWEETENED
VANILLA ALMOND
MILK (OR CHOICE
ALTERNATIVE)

½ SMALL AVOCADO,
QUARTERED

1 TBSP MATCHA POWDER

Add all ingredients in the order listed and blend for the automatic 30-second cycle. If necessary, repeat the cycle for one more round to yield a smoother consistency.

Citrus berry.

180 ML FRESH GRAPEFRUIT
JUICE

½ SMALL LEMON-JUICE ONLY

120 GRAMS BLUEBERRIES

Add all ingredients in the order listed and blend for the automatic 30-second cycle. If necessary, repeat the cycle for one more round to yield a smoother consistency.

Care & maintenance.

Cleaning and caring for your nutribullet® GO is as simple as using it. Here are some tips and best practices that will keep your machine in top shape.

Here's how to clean the nutribullet®:

STEP 1:

Always make sure the nutribullet® GO is turned off after each use.

STEP 2:

Hand wash the cup and lid with warm, soapy water and rinse clean.


Gently rinse the blade assembly and carefully clean with a damp sponge or cloth.


NOTE: Be careful not to fully submerge the motor base or run directly under water.

The nutribullet® GO cup and lid are **NOT** dishwasher safe.

 **WARNING**

Always be extremely careful not to touch the blades, as these are very sharp.

 **WARNING**
DO NOT PUT HOT LIQUIDS IN THE BLENDING VESSEL.

 **WARNING**
NEVER SUBMERGE MOTOR BASE INTO WATER OR ANY OTHER LIQUID.

STEP 3:

When not in use, store all parts of the blender together in a safe place where they will not be damaged and won't cause harm.

Replacement parts.

To order additional parts and accessories, please visit our website at [nutribullet.co.uk](https://www.nutribullet.co.uk).

EN/Explanation of the marking



EN/This marking indicates that this product should not be disposed with other household wastes throughout the EU. To prevent possible harm to the environment or human health from uncontrolled waste disposal; recycle it responsibly to promote the sustainable reuse of material resources. To return your used device, please use the return and collection systems or contact the retailer where the product was purchased. They can take this product for environmental safe recycling



EN/The transport and protective packing has been selected from materials, which are environmentally friendly for disposal and can be recycled. Ensure that any plastic, wrappings, bags etc. are disposed of safely and kept out of the reach of babies and young children. Rather than just throwing these materials away, recycle them



EN/Manufacturer's declaration that product meets the requirements of the applicable UK directives

nutribullet

**Need help?
We're here
for you**

**Visit
NutriBullet.co.uk for:**



FAQ'S



Video Guides



Recipes

Join our community



MODEL: (NBG-100) NB09300

RATING: 7.4V

USB INPUT FOR CHARGE: 5V === 2A 10W

Capital Brands Distribution, LLC, Los Angeles, CA 90025

nutribullet.co.uk | All rights reserved.

nutribullet® and the nutribullet® logo are trademarks of

CapBrn Holdings, LLC registered in the U.S.A. and worldwide.

Illustrations may differ from the actual product. We are constantly striving to improve our products, therefore the specifications contained herein are subject to change without notice.

210809